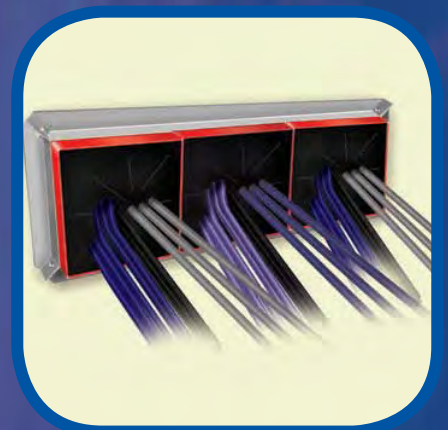
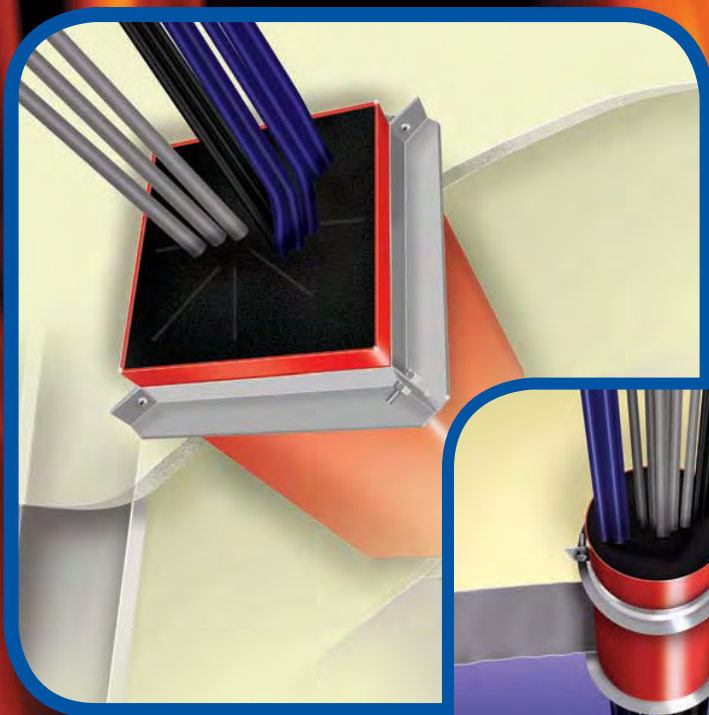


# CT120 Cable Transit System



- Tested to BS EN 1366-3
- Designed for single or multiple cables
- Easy to install and alter cabling
- Use in floors & walls - including drywall
- Easy retrofit design



fireclamp

high performance firestop products

### WHAT ARE ABESCO CT120 CABLE TRANSITS?

Part of the Abesco Fireclamp range, the Abesco CT120 Cable Transit device is designed to prevent the spread of fire and smoke from one compartment to another where electrical, data and communication cables penetrate through separating walls and floors.

Abesco CT120 Cable Transits consist of a square or round section steel sleeve, which contains a heat reactive intumescent material. The unit has an integral hinged top that provides an easy retrofit option where cables are pre-installed.

Abesco CT Mounting Flanges provide a quick and easy method of installing single or multiple CT120 Cable Transits...even in drywall partitions. Their unique retrofit design enables them to attach the CT120 Cable Transit in place without the use of mechanical fixings. Various sizes of flange are available to accommodate the square units to be banked together with up to 6 devices.

### WHY USE ABESCO CT120 CABLE TRANSITS?

- Approved worldwide and recognised by independent authorities and tested in accordance with BS EN 1366-3, BS 476, AS 1530 and ASTM E-814 (UL 1479)
- Manufactured to ISO 9001:2000
- Corrosion resistant – suitable for use in aggressive environments
- Certification for a wide range of cables
- Available in a range of sizes
- Very easy to install and provides total flexibility in cable routing
- Abesco graphite intumescent is unaffected by moisture
- Same unit for original installs and retro fitting

### WHERE DO I USE ABESCO CT120 CABLE TRANSITS?

Abesco CT120 Cable Transits are suitable for use in any building where electrical, data, or communication cables penetrate through fire rated compartment floors and walls, including drywall.

*Typical types of buildings where Abesco CT120 Cable Transits are commonly used are:*

Banking and finance buildings, data processing centres, TV and media studios, apartment buildings, hotels, office buildings, hospitals, airports, retail centres etc.

### WHAT HAPPENS IN A FIRE SITUATION?

When exposed to the heat of a fire, the graphite based intumescent material contained in the Abesco CT120 Cable Transits expands rapidly to close and seal the inside of the sleeve, preventing the spread of fire and smoke from one compartment to another.

### HOW TO SPECIFY ABESCO CT120 CABLE TRANSITS

For specification and installation details please refer to Technical Data Sheet

### OTHER PRODUCTS

Abesco supply a wide range of Firestop products, which provide the specifier, engineer, and contractor with cost effective solutions to most passive fire protection problems, experienced on today's construction projects.

- Pipe Collars
- Pipe Wraps
- Fire Rated Mastics
- Fire Rated Expanding Foam
- Fire Rated Pillows
- Fire Rated Boards for multiple service penetrations
- Fire Rated Movement Joints
- Intumescent Fire Dampers
- "Protecta WB" system - Intumescent paint for structural steel protection

### NON STANDARD MANUFACTURING AND TESTING

Abesco products can be manufactured to meet project specific requirements where standard production specifications may not fulfil all a client needs. For example, size and fixing variations can be accommodated, and special design facilities are available.

### HOW DO I ORDER?

Your local supplier is:



Abesco Ltd., Abesco House,  
Laurencekirk Business Park,  
Laurencekirk, AB30 1EY, Scotland, UK  
Tel: +44 (0)1561 377766 Fax: +44 (0)1561 378887  
info@abesco.net

Abesco LLC  
Unit 325,  
9561 Satellite Blvd.  
Orlando, FL 32837  
www.abesco.net



## CT120 Cable Transit

designed for quick and easy rerouting of cables  
part of the fireclamp firestop system

new cabling installation

### Description

1) Cut or form a suitable size opening in the floor or wall, ensuring that any annular space between the CT120 and the opening is within the limits defined by the tested constructions.

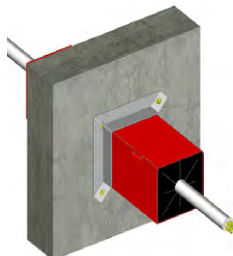
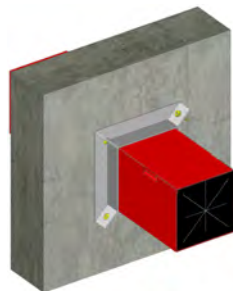
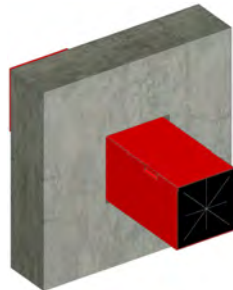
2) Slide the CT120 into the previously formed opening, making sure that it is positioned centrally within the thickness of the floor or wall ensuring that an equal length protrudes either side.

3) CT120 Cable Transits are installed using CT Mounting Flanges which are friction fitted. Using the correct size CT Mounting Flanges, open flanges and fit over each end of the CT120 (ie 1 flange on each side of wall). Slide each flange until it is pressed against the surface of the wall or floor. Fit the supplied nut and bolt thru the pre formed holes in the open corner of each flange and tighten securely in position. Ensure that CT Mounting Flanges are correctly fitted on BOTH SIDES of wall and floors. Once secured in position by the bolts supplied, the mounting flanges DO NOT need to be separately fixed to the wall or floor.

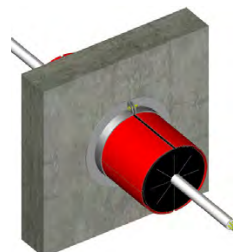
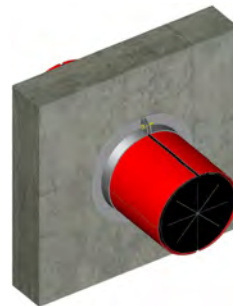
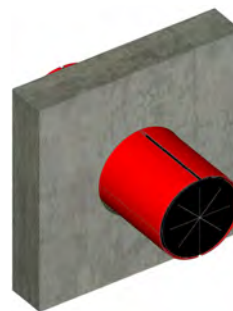
4) Remove the supplied end plugs and pass the cables through the CT120 and support on either side of wall or floor as required. Re-fit the end plugs into both ends of CT120 around the cables.

NOTE: Permanent Cast In Option - In Concrete Floors, CT120's can be permanently cast into the floor by back-filling the annular space with Abesco FR Mortar.

### CT120



### CT120/R



technical datasheet

## CT120 Cable Transit

designed for quick and easy rerouting of cables  
part of the fireclamp firestop system

existing cabling installation

### Description

1) Select the correct size of CT120 to suit the existing opening. If necessary enlarge the opening to allow for installation ensuring that any annular space between the CT120 and the opening will be within the limits defined by the tested constructions.

2) Open the CT120, remove the supplied end plugs and fit around the existing cables. Close the CT120 around the cables.

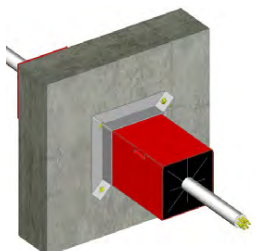
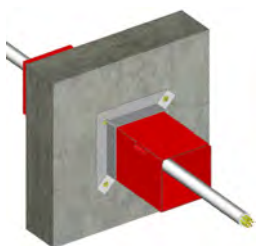
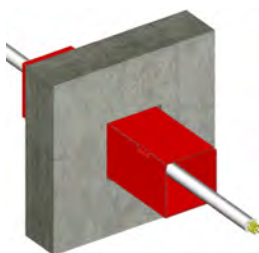
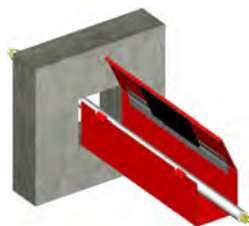
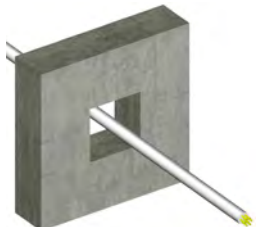
3) Slide the CT120 into the previously formed opening, making sure that it is positioned centrally within the thickness of the floor or wall ensuring that an equal length protrudes either side.

4) CT120 Cable Transits are installed using CT Mounting Flanges which are friction fitted. Using the correct size CT Mounting Flanges, open flanges and fit over each end of the CT120 (ie 1 flange on each side of wall). Slide each flange until it is pressed against the surface of the wall or floor. Fit the supplied nut and bolt thru the pre formed holes in the open corner of each flange and tighten securely in position. Ensure that CT Mounting Flanges are correctly fitted on BOTH SIDES of wall and floors. Once secured in position by the bolts supplied, the mounting flanges DO NOT need to be separately fixed to the wall or floor.

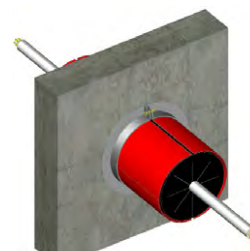
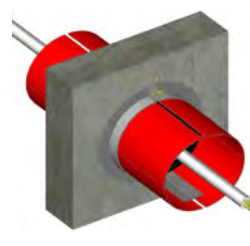
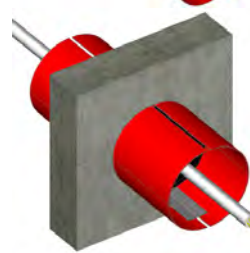
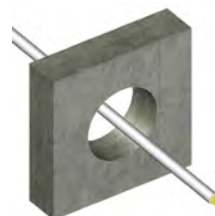
5) Re-fit the end plugs into both end of CT120 around the cables.

NOTE: Permanent Cast In Option - In Concrete Floors, CT120's can be permanently cast into the floor by back-filling the annular space with Abesco FR Mortar.

### CT120



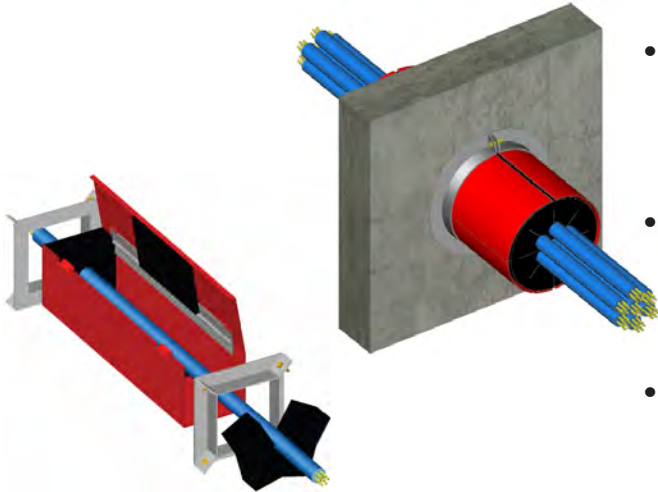
### CT120/R



technical datasheet

## CT120 Cable Transit

Designed for quick and easy rerouting of cables and other services  
part of the **fireclamp™** firestop system



### product description

Abesco CT120 Cable Transits are firestop devices which are designed to allow cables to penetrate fire-rated floors and walls. They consist of a square or round section steel sleeve, which contains the heat reactive graphite based intumescent material.

The transits can be opened to provide an easy retro-fit option where cables are preinstalled, and are designed to allow for the installation or removal of additional cables.

When exposed to high temperatures the graphite based intumescent material begins to expand rapidly to form a solid insulating char plug which effectively closes and seals the CT120 to prevent the passage of fire and smoke thru the fire-rated wall or floor.

Each CT120 is supplied with 2 end plugs which are inserted after the cables have been installed to reduce smoke leakage. The CT120's can be fixed in position using specially designed CT Mounting Flanges which 'friction' clamp onto the transit and require no additional fixing to the wall or floor.

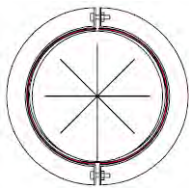
- Approved worldwide and recognised by independent authorities
- Tested in accordance with EN1366-3, BS476-20, ASTM814 (UL1479), and AS1530-4
- Fire tested for a wide range of cables and other services
- Available in a range of square and round units
- Bank single square devices together for larger openings
- Very easy to install and provides future firestopping needs
- Unaffected by moisture
- Same unit for original installs and retro fitting
- Manufactured to ISO9001:2000



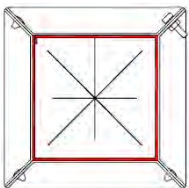
FOR USE IN THROUGH PENETRATION FIRESTOP SYSTEMS SEE UL DIRECTORY OF PRODUCTS CERTIFIED FOR CANADA AND UL FIRE RESISTANCE DIRECTORY 24KP

## CT120 Cable Transit

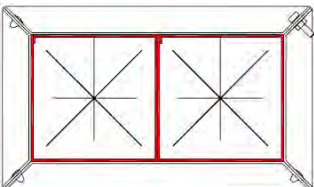
### CT120 install configurations



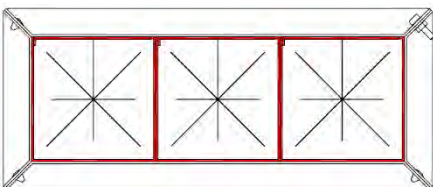
CT120/R with CT/R Mounting Flange



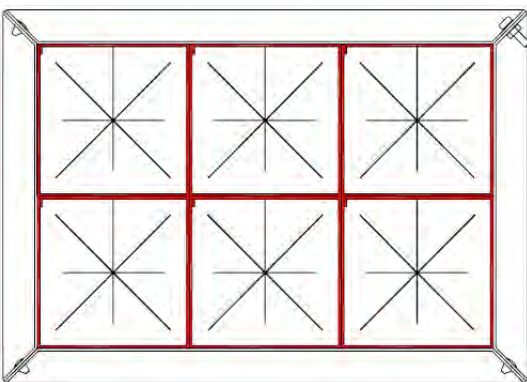
CT120 with CT Mounting Flange



2 x CT120 with Duplex CT Mounting Flange



3 x CT120 with Triplex CT Mounting Flange



6 x CT120 with Sixplex CT Mounting Flange

### physical properties

Nominal Size	65mm CT	102mm CT	50mm CT/R	100mm CT/R
Dimensions (mm)	65 x 65	102 x 102	50 OD	100 OD
Length	All devices 254mm in length			
Shell	22 Gauge Steel			
Finish	Red Powder Coated Finish			

### application

Abesco CT120 Cable Transits are used to seal cables which penetrate through walls and floors, and are suitable for most common types of construction including concrete walls and floors, concrete block walls and gypsum drywall assemblies, and rated wooden floor constructions.

Individual CT120 Cable Transits can be ganged together to form duplex, triplex or sixplex units using special CT Mounting Flanges. Suitable for an extensive range of data, communication and electrical supply cables, CT120 Cable Transits offer flexibility, expandability, and reliability.

For installation instructions, please refer to relevant installation sheet. Contact Abesco for further details.

### accessories

**Abesco CT Mounting Flange Sets** offer a unique fixing device that requires no mechanical fixing to the wall or floor. Each set consists of two complete flanges which are friction fitted around the CT120 device/s on either end to keep the device in situ. The flanges can be easily removed if future maintenance is required leaving no damage to the wall or floor.

**Abesco CT Stud Mounting Brackets** allows a single square or round CT120 device to be fitted to a drywall stud prior to the board being applied. This allows for cable runs prior to the drylining process. The bracket is simply screwed onto the stud and friction fits the CT120 in place.

## ordering information

Abesco CT120 Cable Transit devices are individually boxed and labelled or sold in shipping cases of 6 devices.

Abesco CT Mounting Flange Set and CT Stud Mounting Brackets are packed and labelled individually in clear sealed bags before being packed into their shipping cases.

Code	Description	Colour	Unit	Case
<b>CT120 Devices</b>				
31938	50mm CT120/R Cable Transit Device	Red	50mm Dia.	6
31950	100mm CT120/R Cable Transit Device	Red	100mm Dia.	6
31940	65mm CT120 Cable Transit Device	Red	65 x 65mm	6
31942	102mm CT120 Cable Transit Device	Red	102 x 102mm	6
<b>CT Mounting Flange Sets</b>				
31968	50mm CT/R Mounting Flange Set	Galv	50mm Dia.	12
31998	100mm CT/R Mounting Flange Set	Galv	100mm Dia.	12
31972	65mm CT Mounting Flange Set (Single)	Galv	65 x 65mm	12
31974	65mm CT Mounting Flange Set (Duplex)	Galv	65 x 130mm	12
31976	65mm CT Mounting Flange Set (Triplex)	Galv	65 x 195mm	12
31978	65mm CT Mounting Flange Set (Sixplex)	Galv	130 x 195mm	6
31982	102mm CT Mounting Flange Set (Single)	Galv	102 x 102mm	12
31984	102mm CT Mounting Flange Set (Duplex)	Galv	102 x 204mm	12
31986	102mm CT Mounting Flange Set (Triplex)	Galv	102 x 306mm	12
31988	102mm CT Mounting Flange Set (Sixplex)	Galv	204 x 306mm	6
<b>CT Stud Mounting Brackets</b>				
32170	50mm CT/R Stud Mounting Bracket	Galv	-	12
32185	100mm CT/R Stud Mounting Bracket	Galv	-	12
32175	65mm CT Stud Mounting Bracket	Galv	-	12
32180	102mm CT Stud Mounting Bracket	Galv	-	12