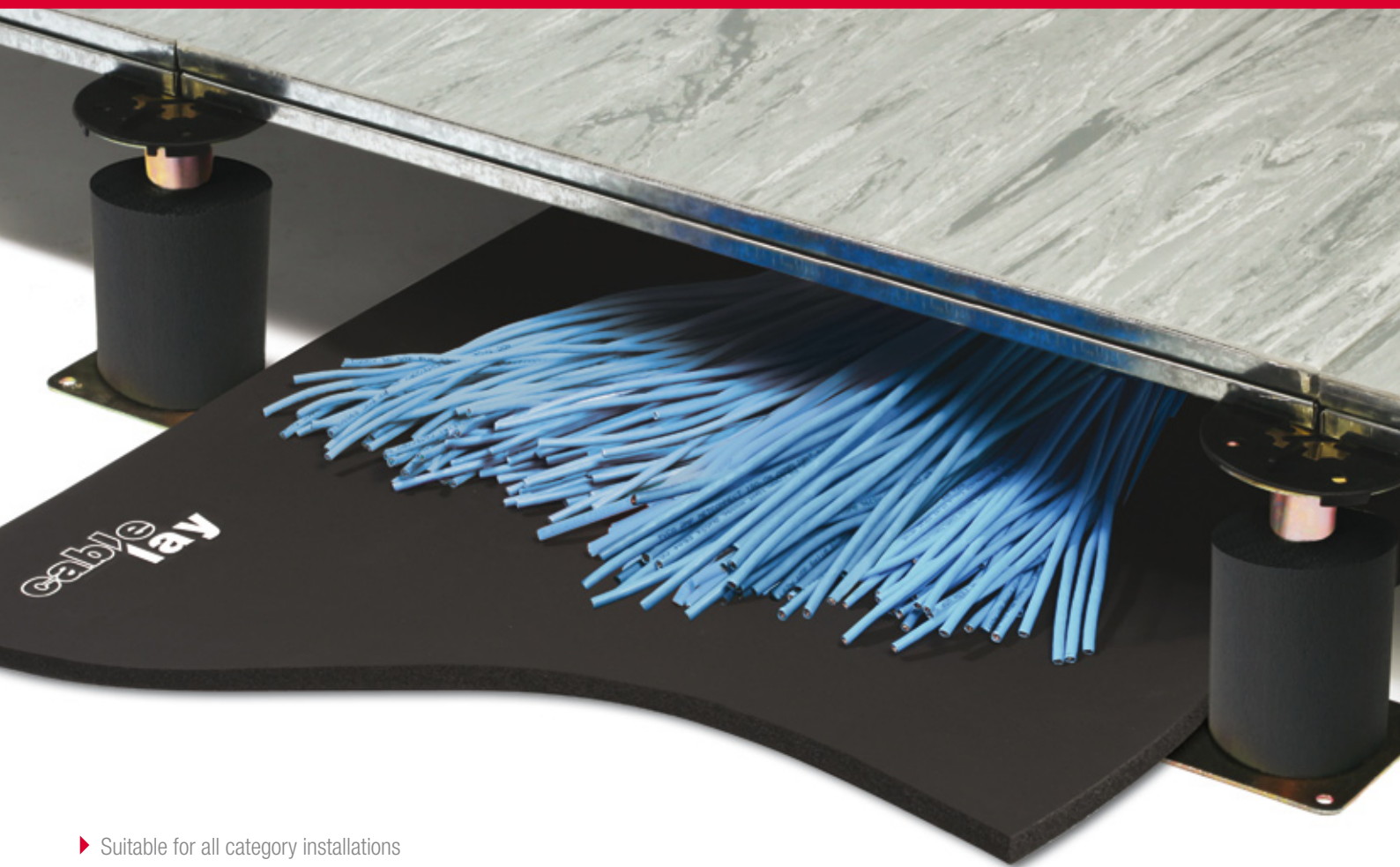


cable **lay**MATTING™

Flexible Protection for Cables



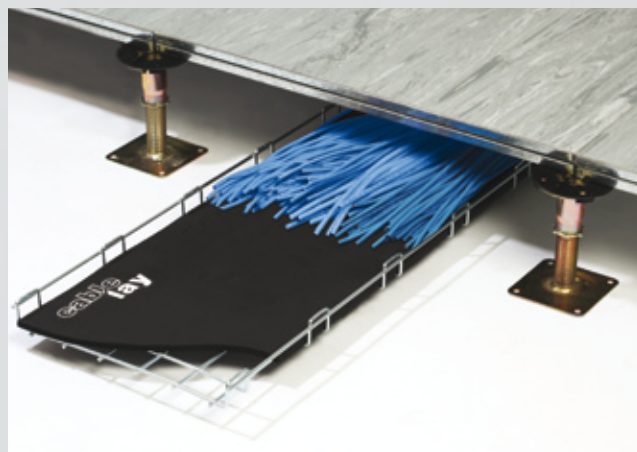
- ▶ Suitable for all category installations
- ▶ Quick, clean and easy to install
- ▶ Lightweight and flexible
- ▶ High moisture resistance
- ▶ Class 0 / LSOH, fire rated
- ▶ Various widths and thickness



Don't get caught out...

Damaged cabling considerably slows down system performance, causes loss of data and costs hours of additional work time. Cablelay Matting is designed to minimise the risk of damage often caused during installation, and the subsequent remedial work and protect the cabling infrastructure for the life of the system.

Don't adopt the 'out of sight, out of mind' attitude; Cablelay Matting will also protect your cables from low level flooding and the inevitable insurance claims (due to flooding, 30% of structured cabling is replaced before new build handover).



What is Cablelay Matting?

Cablelay Matting creates a high performance physical barrier which protects cables from protrusions, sharp edges, rough and uneven surfaces, pressure points in baskets trays, potential chemical impurities and water penetration.

A large number of cabling infrastructures have to be replaced each year due to flood damage, Cablelay Matting raises the cables off the floor, creating a barrier between them and the water. Cablelay Matting is lightweight, clean and flexible, ensuring easy, speedy installation resulting in time and cost savings.

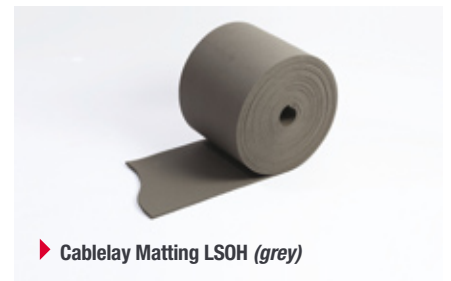


Cablelay Matting: real business benefits

- ▶ Protects cables from pressure points and crushing which can damage the performance of a structured cabling system
- ▶ Protects cables from sharp edges, snagging, protrusions and ridges to help maintain the performance of the cables
- ▶ Black Cablelay Matting has a Class 0 fire standard which meets British Building Regulations
- ▶ Also available in LSOH (low smoke zero halogen) and ES (European specification)
- ▶ Is 'closed cell' preventing any chemical or moisture penetration from the concrete substance
- ▶ Is available in a wide range of widths, thicknesses and roll lengths
- ▶ Creates a dedicated and visible route way that is lightweight and flexible, so it is easy to install saving time and money
- ▶ Any last minute changes to the routeway can easily be accommodated by lifting and repositioning, delivering the project on time
- ▶ Can easily be trimmed to length using the Cablelay metre marks
- ▶ Rolls are joined using Cablelay Tape which maintains the Fire Standard and prevents joint movement
- ▶ 25mm thick is ideal for computer rooms/pan areas with a high density of cable



▶ **Cablelay Matting Class 0 (black)**



▶ **Cablelay Matting LSOH (grey)**

Cablelay Matting for 'direct to floor' and basket tray

Cablelay Matting is the flexible choice for underfloor or basket tray-based cabling. A variety of thicknesses are available depending on the type of solution that is required.

Cablelay Matting for the floor

For cabling that needs to run under the floor, 13mm and 25mm thicknesses are advisable, as these have been designed to be laid directly onto concrete, creating a dedicated route.

The 25mm thickness is ideal for communications rooms or pan areas, and is becoming increasingly popular. It offers the cables even more support and flood protection in densely populated areas.

Cablelay Matting for basket/tray

A lighter weight 6mm option is available for protecting cables in basket, cable trays and other containment systems where pressure points and snagging are an issue.

Sizes available

- ▶ 6 mm for basket/containment
- ▶ 13 mm for direct to floor
- ▶ 25 mm for direct to floor or pan areas

Accessories available

Cablelay Tape

Join rolls easily and safely with Cablelay Tape. 3mm Cablelay with a strong adhesive backing.



Cablelay Leg Protectors

Tubular Cablelay, protecting cables from the pedestal legs in a raised floor system.



Cablelay Bridges

Ultimate flexibility for cabling layouts with the LSOH Cablelay Bridge. Made to order.



Cutting Tools

A range of cutting and safety cutting tools available.



Setting the standard

Building Regulations

Quality assurance and health and safety issues are becoming increasingly more important, Class 0 Cablelay has an excellent fire safety performance complying with British Building Regulations by passing both BS476 parts 6 and 7 for fire propagation and surface spread of flames.

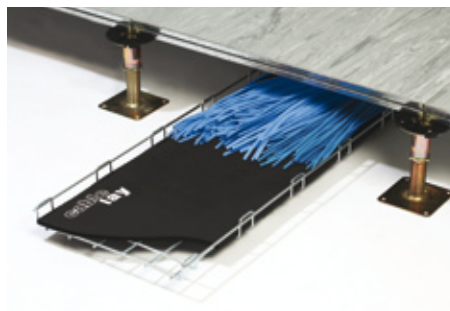
Class 0

Class 0 conforms to The Building Regulations Approved document B, adequately resisting the spread of flame over their surfaces.

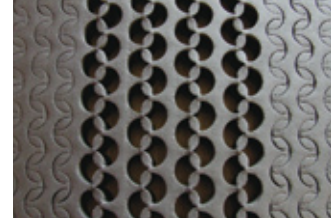
Low Smoke Zero Halogen

Low smoke zero halogen reduces the amount of potentially harmful halogens in the event of fire and conforms to BS476 part 7.

We can also supply Cablelay Matting to conform to various international fire regulations.



Other products available



► **Cablelay Expand** – Cablelay Matting specially cut so it can be pulled apart and expanded.



► **Cablelay Rigid** is a halogen free solid foam matting designed to line baskets and cable trays.

"The quality of the data cable environment is crucial to the cables future performance"